



St Lawrence CE Primary

NEWSLETTER

Friday 21st July 2023

'Being the best we can be, because with God all things are possible'

Dear Parents

As we reach the end of this school year, I am reflecting on all the wonderful achievements your children have made, and all of the memories that have been created. From Christmas church services, forest school, to Coronation tea parties, trips and visits, to wonderful SAT results and a water fight! I hope that you all have many happy memories and that the children carry these with them into next year, wherever that may be.

I feel incredibly proud of all the children and grateful to the wonderful staff who are so dedicated to doing their best every day. We have members of staff moving on this summer to new adventures or to promotions. I wish them all the very best and thank them for their hard work and service during their time with the Federation.

I am also thankful for the support we receive from the parents and look forward to continuing to work together next year.

"I know the plans I have in mind for you, declares the Lord; they are plans for peace, not disaster, to give you a future filled with hope." Jeremiah 29:11 is a wonderful way of us thinking about this time of change and new opportunities; we will face new challenges, but we will always strive for better and look forward positively.

Wishing you a wonderful summer and I look forward to seeing you all in September.

Mrs Nash

Farewell from Mrs Moore.....

As I say one more farewell at the gate I just wanted to say that I have been honoured and privileged to have been Head of School at St. Lawrence CE Primary for eight wonderful years. Having been a Reception teacher, I have been able to watch those bright eyed, eager four year olds grow and flourish into resilient, capable learners who really should be so very proud of themselves. I have worked with the most wonderful staff and pupils and I know that during my time at St. Lawrence I have made firm friends. The staff at St. Lawrence are truly magnificent and every day they strive to be the best they can be, always working hard, and placing the children at the heart of all decisions. My career has spanned for 23 years but it is now time for me to take a break, concentrate on my family and take hold of the new opportunities that have come unexpectedly my way. St. Lawrence is a very special place to be and I will always think of it fondly, taking with me some of the magic! I wish you and your families every happiness for the future and I thank you for being part of my journey.

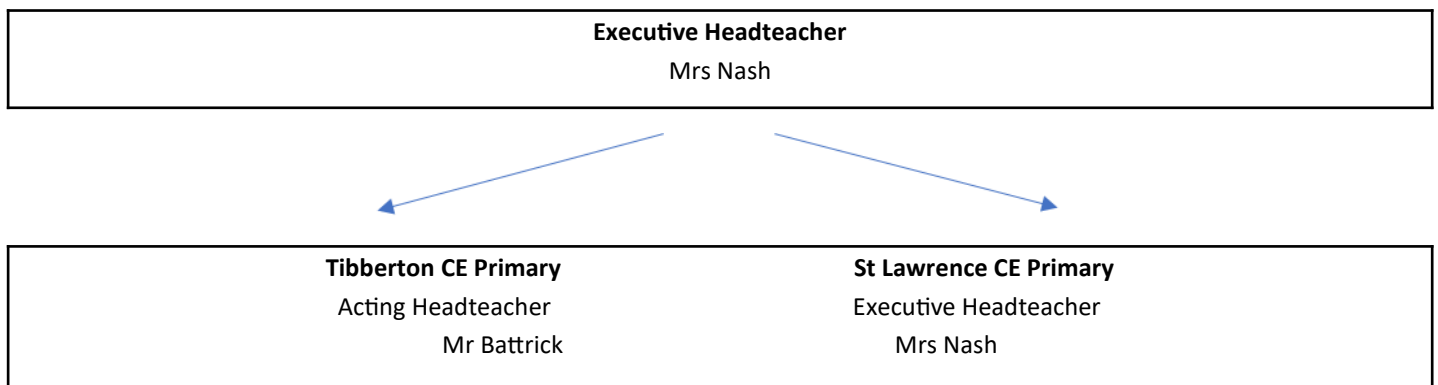
A note from the Governors.....

Dear Parents,

Many of you will be aware that Mrs Moore, Head of School at St Lawrence will be leaving her post at the end of this week. Mrs Moore has worked at St Lawrence for eight years and we are really sad to see her go. Her leaving is due to her husband taking a job overseas and she will shortly be moving to join him.

As Mrs Moore was the Head of School at St Lawrence, working under the direction of The Executive Headteacher Mrs Nash, the governors considered that the best approach was to continue with Mrs Nash directly leading St Lawrence. This is an interim arrangement, which had been in place since Mrs Moore's absence due to sick leave. This interim arrangement will look like this:

The Federation of Tibberton & St Lawrence CE Primary Schools



Each school in the federation has at least one other qualified DSL (Designated Safeguarding Lead) who will be on site at all times.

I hope you all have a good summer break spending quality time with your children.

Best wishes,

Lynne Law
Chair of Governors

[MAXELL EDUCATIONAL TRUST GRANT 2023](#)

We would like to say a very big thankyou to Maxell Europe Limited based in Telford for accepting our application for a Maxell Educational Trust Grant 2023.

Their grant will go towards supporting the nurture space project at St Lawrence Primary School.





Celebrating success this week

AWARDS THIS WEEK GO TO....

St. Lawrence Values Award

Our St. Lawrence Values Award is an award nominated by the pupils and teachers to reflect the school's values represented in the 'St. Lawrence Way'. This week Mrs Standish has nominated Angelica for having respect for all children and adults in school

HEAD TEACHER AWARD

Year 6 - for being a fabulous year 6!

Class One

Arthur E - for always having a positive attitude and a smile on his face.

Class Two

Niamh - for producing a super project about fossils.

Hudson - for working so hard all week and making positive choices.

Class Three

Reuben - for sharing great enthusiasm for learning.

Max - for always maintaining a positive attitude to learning.

Class Four

Abi - always being a fantastic friend to others.

Olivia P - Excellent effort in school

House point winners

This week the winning house is **St Patricks** with a staggering **26** points.

Well done to **Graciella** the House Captain and everyone who is a member of this house.

HOUSE NAME	POINTS THIS WEEK	POINTS IN TOTAL
St David	16	1023
St Patrick	26	979
St Andrew	14	1102
St George	15	953



ATTENDANCE AWARD

Class 1 have won this week's Attendance Trophy with an attendance figure of 94.51%




Very well done!

Newport Show.....



Here are the brilliant entries for the Year 5 Photography Competition.

Results were as follows.....

-  1st Leo,
-  2nd Liv B.,
-  3rd Olivia D.



Please zoom in and have a close look at all the amazing photos.

We thought you were all winners, well done.



Beth entered in a number of junior crafts at Newport show. She achieved 2 firsts, 2 seconds and a third.

Newport Show...

We also entered the Potato Growing Competition. Unfortunately we were not placed but still produced a decent crop of potatoes. Better luck next year.



Our amazing children, as always, produced some wonderful artwork this year. Mrs Sankey took a selection of this artwork to decorate our school display at Newport Show, Visitors to the show were treated to 3D landscape models from Class 2 and. Mayan Worry Dolls from Class 3.

Class 1 contributed African collar necklaces, real flower and leaf bunting, bee artwork and clay sculptures based on flowers and coral reefs.



Out of School Achievements



Isla was 'Tommy' in Matilda JR for two nights. This is through The Arts College Telford. She loved the experience and will be auditioning for Les Miserables in September.

Well done Isla!



Grace has only just learnt how to cycle using pedals, having been used to riding just a balance bike.

We had a fabulous Family bike ride that saw Grace complete a huge 5 miles on her pedals and then swapped to being a passenger in Mummy's bike trailer!

Emily smashed her previous sponsored cycle distance of 13 miles and finished on a whopping 25 miles!!

We rode all the way from home to Coalport and back again using the Silkin way!

The girls were lucky enough to be congratulated on their amazing effort by a very special person, and Neighbour, Luke Pollard.

Luke is a World, Commonwealth and European champion guide who represented ParalympicsGB and recently won Gold in last years Paralympic Triathlon.

He even brought his Gold medal along to show the girls and explain that in the Triathlon he only had to cycle half the distance that they had completed on the whole sponsored bike ride!

Between both of the girls they raised an incredible £801 !!!

Well done girls!





Thank you to all the children that attended the Leavers Prom on Tuesday 18th July, It sounds like everyone had a great time!



A big thank you to Mr and Mrs Bagnall for arranging this event and raising £100.00 for the school funds.

Thank you so much!





Telford & Wrekin
Co-operative Council

Protect, care and invest
to create a better borough

TravelTelford



Learn2ride with Telford Bike Hub

Learning to ride is an essential life skill but sometimes we need a little help. Telford Bike Hub offers support for both adults and children (aged 4+) in group or 1-2-1 sessions.

Each session is one hour and costs:

1-2-1 £25 per hour

Group sessions (up to eight people per group) £10 per hour

On average it takes three sessions to get pedalling but everyone is different.

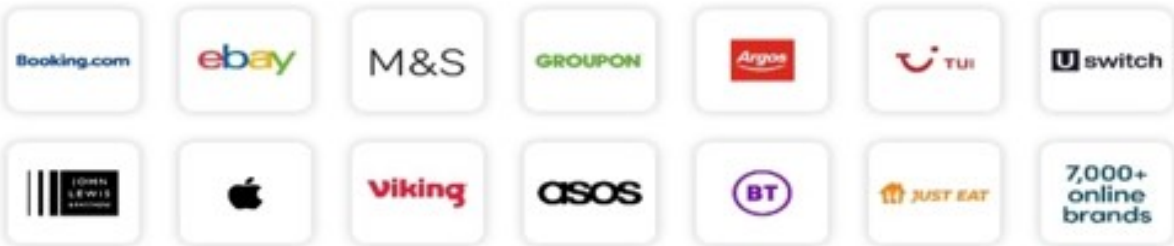
For more information email thebikehub@telford.gov.uk or call **01952 380413**

To book an available group session visit www.ticketstelford.com and search **Telford Bike Hub**



See your favourite brands donate
to us whenever you spend
with them

Find out more



We're now registered with easyfundraising, which means you can help us for FREE. Over 7,000 brands will donate to us when you use easyfundraising to shop with them – at no extra cost to yourself! All you need to do is sign up and remember to use easyfundraising whenever you shop online. It's easy and completely FREE! These donations really mount up, so please sign up to support us at https://www.easyfundraising.org.uk/causes/friends-of-st-lawrence-telford/?utm_campaign=raise-more&utm_medium=email&utm_content=rm-en-n1

easyfundraising
turns your online
shopping into
everyday magic

Support us



easyfundraising You shop, brands donate to us