

# Weekly Newsletter

## St Lawrence CE Primary



Friday 27th September 2024

**.'Being the best we can be, because with God all things are possible''**

Dear Parents

A mixed week of weather, but a week of wonderful work and lovely learning at both schools.

Some pupils got the results of their grammar school entrance tests this week. Congratulations to those who did well, but I also want to acknowledge those children who didn't quite achieve the required score- we are so proud of them for having a go; grammar school tests do not test National Curriculum learning, nor do they measure children's worth as artists, musicians, leaders, chefs, builders, neither their compassion, kindness and respect. They do, however, measure resilience, and I am so proud of the resilience these pupils have shown this week; well done everyone.

We had children from both schools join together to enter the sports hall competitions this week at TCAT. I was fortunate to be able to see some of the KS1 event and am again so proud of the children for their hard work and sportsmanship. Thank you to Mr Bennett who supported Mr Mullinder on Tuesday- we are grateful for you giving up your time.

Hopefully you have seen the parentmail message, or read on the website, about our participation in the Wellbeing Charter Mark Award pilot in Telford & Wrekin. We are happy to announce that both St Lawrence and Tibberton schools are amongst the 10 Telford schools chosen to part in this pilot scheme. We are excited to take part in the project and feel this will help our work on developing wellbeing and positive mental health. If you haven't yet, please complete the short Forms survey to OPT IN so that your child's feelings can be considered as part of the data for the pilot.

Next week, we have the Harvest Service at Tibberton as well as the Bingo event, and parent consultation meetings at St Lawrence, so I look forward to seeing you at those school events.

Wishing you a happy weekend,

Mrs Nash





# Celebrating success this week

## AWARDS THIS WEEK GO TO....

**Freddie R** in class 2 for showing courage and resilience representing the school at a sporting event this week.



### THE CORE VALUES AWARD

Our St. Lawrence Values Award is an award nominated by the pupils and teachers to reflect the school's values.

This week **Mrs Sankey** has nominated **Emily** for showing compassion when helping another child who has dropped their lunch.

### TEACHER AWARDS

#### Class One

**Emmie** for really trying hard to be independent when writing her letter to Mrs Nash.

**Ophelia** for recreating a two step repeating pattern.

#### Class Two

**Arthur** for his superb role model in class.

#### Class Three

**Aman** for good focus and concentration in all lessons.

**Esmae** for great effort in maths this week.

#### Class Four

**Jake and Soraya** for great contribution to class discussion in English.

### ATTENDANCE AWARD



Class 2 have won this week's Attendance Trophy with an attendance figure of 100%

Very well done!



# Celebrating success this week

Teaching of our behaviour curriculum centres around six core behaviours that encourage children to be polite, active learners.

Children can earn awards for showing the six core behaviours. When they have achieved all 6 awards, they get their name and photo on the hall of fame.



*This week the Behaviour awards go to .....*

**Class 1** - Super sitting: **Noah and Hattie**  
Marvellous Manners: **Rasella**  
Active Learning : **Miley**



**Class 2** - Super Sitting : **Charlotte**  
Wonderful walking : **Sarvan**



**Class 3** - Active learning : **Theo**  
Magnificent manners : **Lily**

**Class 4** - Wonderful walking : **Baaba**  
Super sitting : **Kofi**



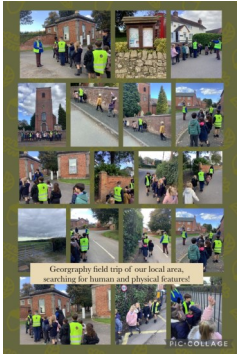
# Well done!



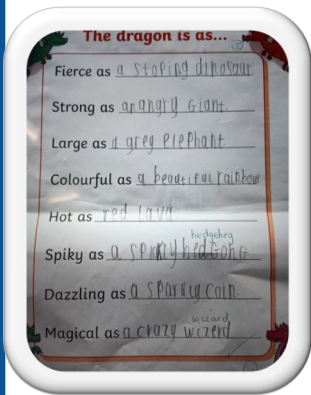
# This week in school



## CLASS 1



In Class 1 this week, we have continued learning about the story of Beegu. We decided that Beegu should come and learn at our School and have been writing letters to persuade Mrs Nash to let Beegu stay. In Maths, we have been learning about the parts and whole amounts, patterns and the number line and number order. Our afternoons have included our fieldtrip for our local area study for Geography, our science experiment on which materials were waterproof and we have designed our balanced wrap in DT, ready to make next week.



## CLASS 2

This week in English, Class 2 have been concentrating on using similes and adjectives to help them to create a poem based on "The Dragons of the Wrekin", which is our focus text. In RE we are learning about 7 days of the Creation Story", producing some excellent artistic interpretations of their chosen day.



## CLASS 3

This week in class 3 we have been learning how to round numbers and what rounding means and why we round. In English the children have been learning how to use inverted commas in their writing and applying this to planning a writing a news report. Children have also created some wonderful homework project linked to our Geography project about Rivers. Well done Class.



## CLASS 4

This week class 4 have begun planning their own spooky stories to tell out loud next week. We have investigated dissolving in science and considered the effects of Viking raids on the British.



# Other school news....

## A request for our Forest School area.

We are planning on making something like this picture for our Forest school area.

If you have any unwanted pots and pans and wish to donate them to school please give them to your child's class teacher.

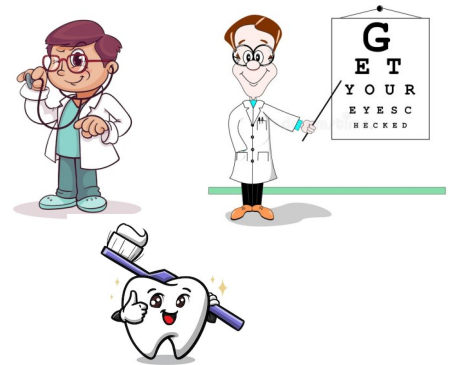
Thank you.



## Appointments during the school day.

Please can we ask that all doctors, dental and opticians appointments be made outside school hours. If you do need to take your child out of school for an appointment, the office staff will need to see a copy of the appointment card or text message prior to the appointment.

Thank you for your cooperation.



## School Funds Accounts Year ending 31st August 2024

St Lawrence CE Primary School School Fund Receipts & Payments Account for year ending 31 August 2024			
Receipts	£	Payments	£
Current Account Balance 1/9/23	36,247.50		
Audit Fees	0.00	Audit Fees	185.26
Bank interest	2.92	Bank charges	0.00
Bookfair	84.50	Bookfair	84.50
Photographs	114.47	Photographs	0.00
Clubs	1,526.32	Clubs	0.00
T&W	655.00	T&W	46,008.30
Best Practice	2,192.50	Best Practice	0.00
Donations	5,434.00	Donations	661.07
Little Oaks	23,051.00	Little Oaks	0.00
Tibberton	262.48	Tibberton	0.00
Friends	420.00	Friends	0.00
Class items	495.00	Class items	0.00
Fundraising	554.41	Fundraising	0.00
School Visits & Events	18,102.94	School Visits & Events	10,614.50
	<b>52,895.54</b>		<b>57,553.63</b>
		Current Account as at 31.8.24	<b>31,589.41</b>
	<b>89,143.04</b>		<b>89,143.04</b>

In accordance with the school fund guidance notes, I have examined the receipts and payments account, together with books, vouchers and documents relating to St Lawrence CE Primary School for the period ending 31 August 2024

Audit work approved by: Robert Montgomery (CMAIA)  
Audit & Governance Lead Manager

Date: 26/09/2024

In my opinion the records have been properly kept and the receipts and payments account is in agreement with the books, vouchers and documents submitted and the explanation given to me.



# Out of School Achievements

On

## SCHOOL GAMES

Wednesday this week some Ks 1 children competed in the Telford Schools Sports Hall Athletics Championships at Telford College and came 2nd overall.

Well done to all the children from St Lawrence and Tibberton Primary School.

Thank you to Mr Mullinder and Mrs Kynaston for accompanying them to the event.



Reid and Beth helped manage the tuck shops to help raise money for

Newport

under 14s rugby tour.

Well done both



# Dates for your Diary

DATE	EVENT
<b>OCTOBER</b>	
Tuesday 22nd	1pm - Parent consultations
Friday 25th	Class 3 trip - Carding Mill Valley Last day of term
<b>NOVEMBER</b>	
Monday 4th	Back to school
Friday 8th	New Reception starter 2025 open afternoon 4–5pm
Mon11th–Fri 15th	National School Meal Week
Friday 15th	Children In Need–Wear Spotty for a donation
<b>DECEMBER</b>	
Thursday 5th	Whole school Theatre trip (Morning)
Wednesday 11th	Reception to Year 6–Nasal flu spray
Friday 13th	5 - 6.30pm - Christmas disco
Tuesday 17th	1pm - KS1 Nativity in Church
Wednesday 18th	Christmas jumper day / Christmas lunch
Thursday 19th	1.30pm & 6pm - KS2 Nativity in Church
Friday 20th	Last day of term
<b>JANUARY 2025</b>	
Monday 6th	PD Day
Tuesday 7th	Back to school

